

TON  
— 1

A place for creators,  
originators and change  
makers to thrive.

ATELIER  
GARDENS







Ton-1 has been transformed from a film studio into a unique and multi-functional event space, like no other.



700 sq m of beautifully adaptable event space at Atelier Gardens in Berlin.

Up to 1,000 person capacity and offering best-in-class conference, screening and audio technology.

With access to pioneering garden spaces and site amenities including workspaces, organic catering facilities and a bar, all embedded in an inspirational community.





**Ton-1 welcomes  
all kinds of  
reflective,  
educational  
or celebratory  
activities,  
for groups of all  
shapes and sizes.**

Designed by architects MVRDV, this conscientious restoration of a monument-protected building forms part of the Atelier Gardens campus – a forward-thinking and revolutionary place where facilitating societal change is the core mission.

While the beautiful red-brick film studios have been the perfect place for creativity and storytelling for more than 100 years, Ton-1 has been transformed to accommodate events of the future.





ATELIER GARDENS





Ton-1 is located in  
Atelier Gardens, Tempelhof, Berlin.





VECTOR LOGOS  
TO BE SUPPLIED

ARCHITECTS FOR FUTURE  
TINY FARMS  
QM. GERMANIAGARTEN  
AUREILA  
SARAH WIENER STIFTUNG

# A future society.



**Atelier Gardens is the global home for the pioneers of profound societal change.**

The 23,800 sq m site is being adapted to reuse existing film studio structures and ecologically transform the landscape, revolutionising the future of farming, food, finance, film, leadership and education.

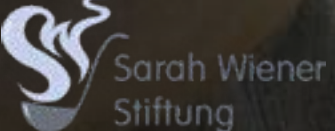
Our spaces are flexible, beautiful, brimming with nature and facilitate the work of the dynamic individuals and inspiring organisations that inhabit them.



KAOSPILOT



The Peng! Collective





TON  
1



Ton-1 is a  
considered,  
sustainable  
space that  
fulfils multiple  
purposes.  
Go configure.

The unique curtain rail system allows users to configure the space as needed.

The central skylights provide natural daylight and are equipped with full blackout blinds, which combined with the high-specification lighting and audio system, allows for a broad spectrum of environments and atmospheres to be created, at any time of day.





Ton-1 is designed to be as flexible as possible.

 700 sq m

The studio has been sustainably repurposed to a best-in-class specification.

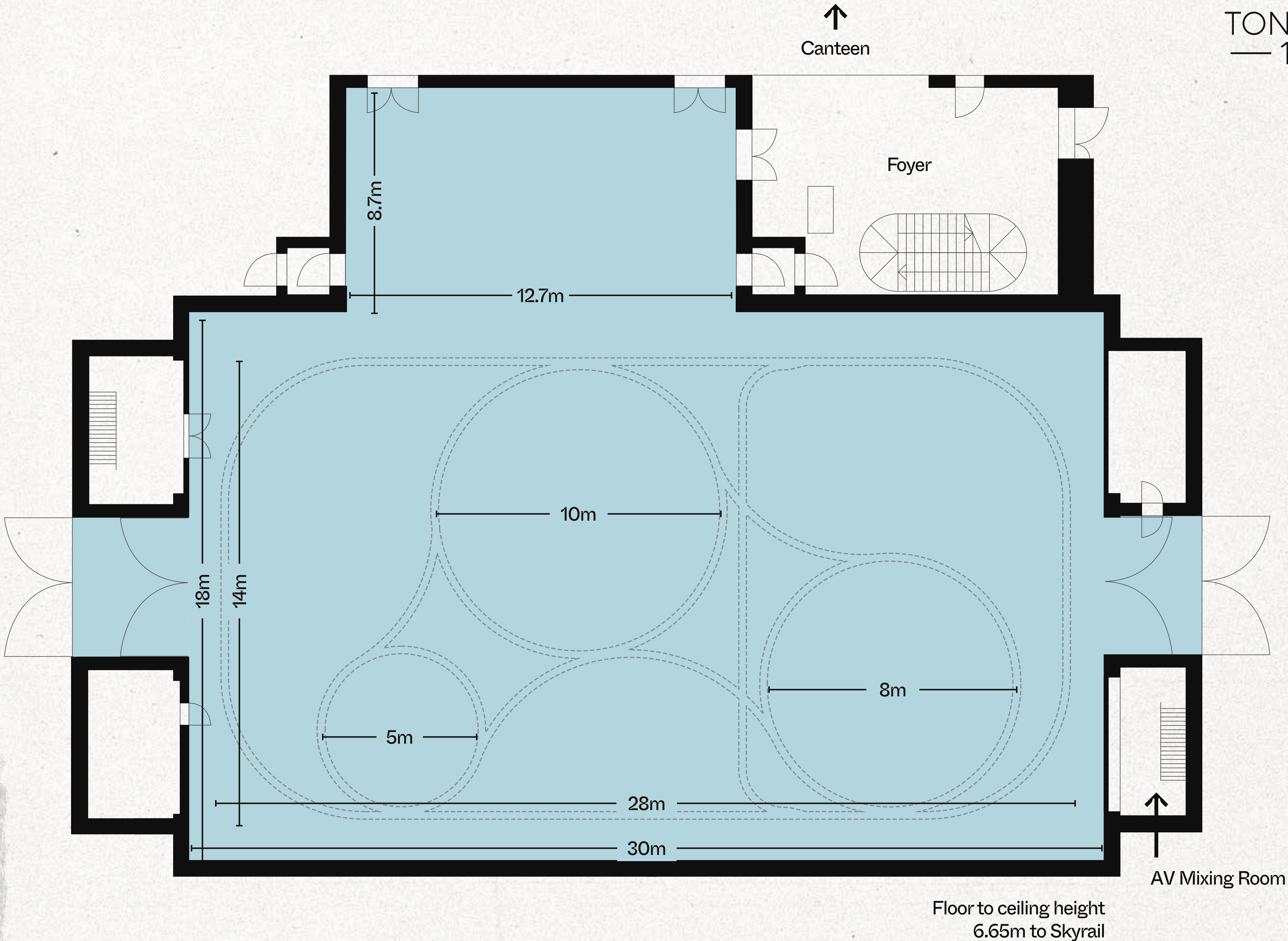
 1,000+ people

Capable of accommodating more than 1,000 people.

 15+ configurations

A highly adaptable and bespoke curtain rail system allows for subdivision into more than 15 possible configurations, enabling the space to accommodate all sized groups, learning and workshop styles.

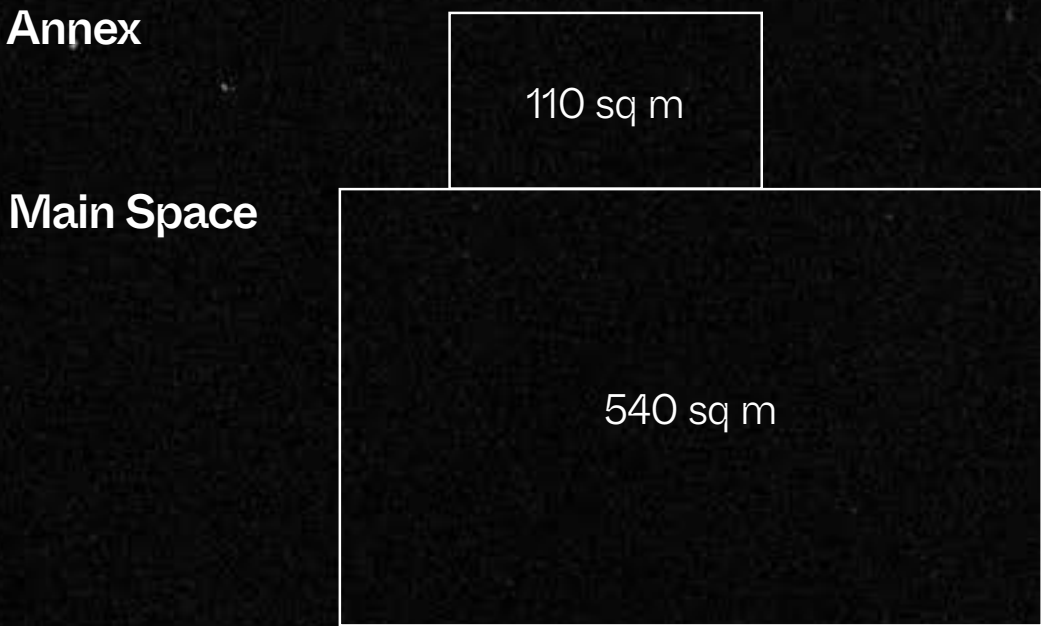
Be that concerts, conferences, exhibitions, film screenings or workshops, the possibilities are endless. Additional catering and workspaces spaces add to this flexibility.



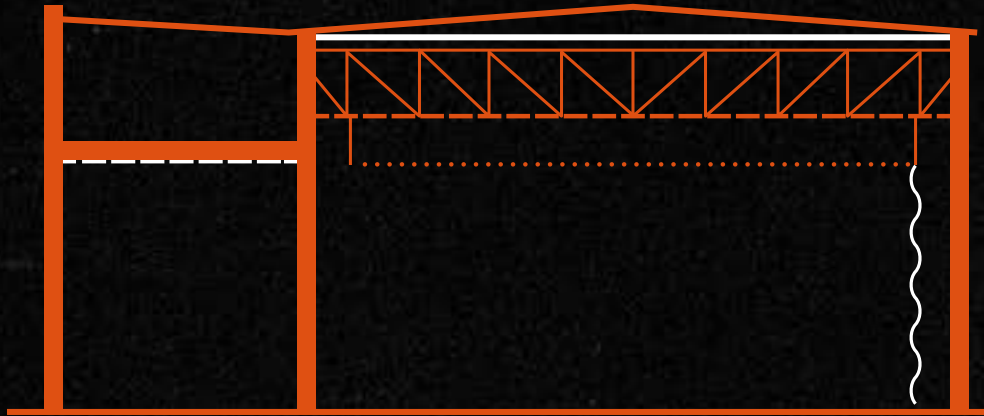


# Tailor-made configurations for every format

 Dimension

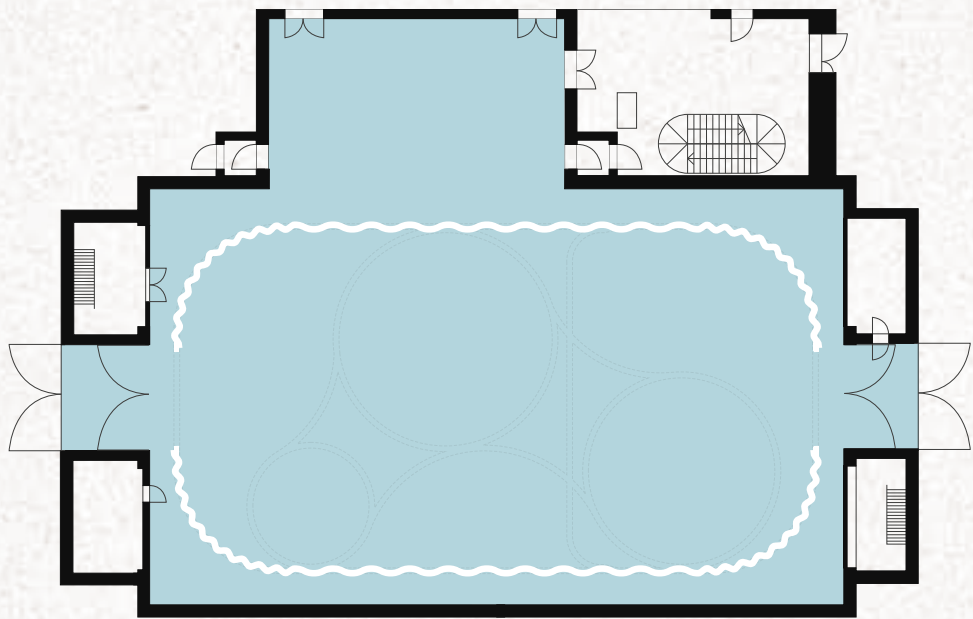


 Floor-to-ceiling Height

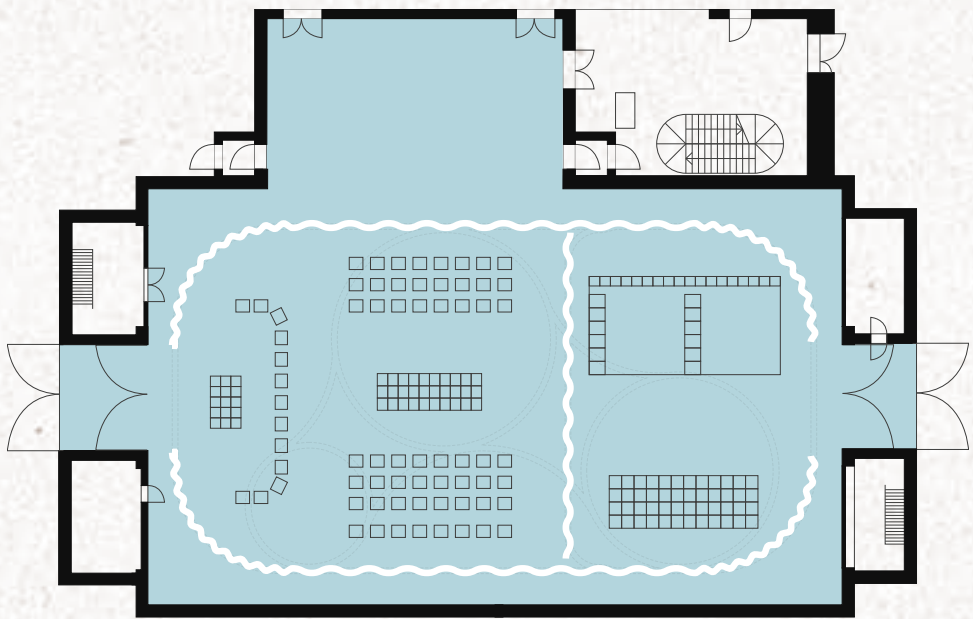


Annex  
---  
6.7m to inner ceiling

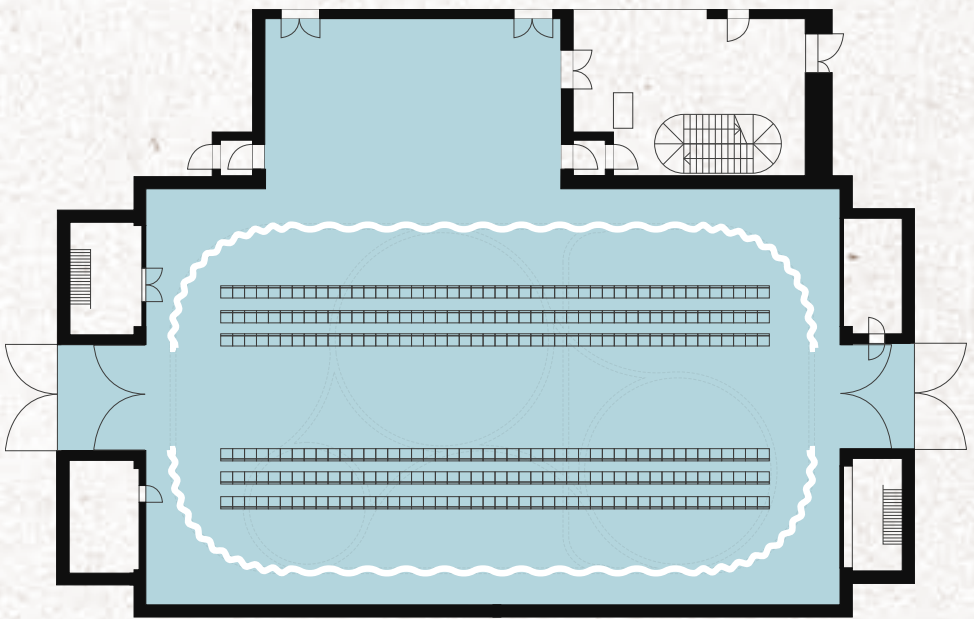
Main Space  
—  
10.0m to inner ceiling  
- - -  
8.1m to bottom of roof truss  
.....  
6.7m to skyrail



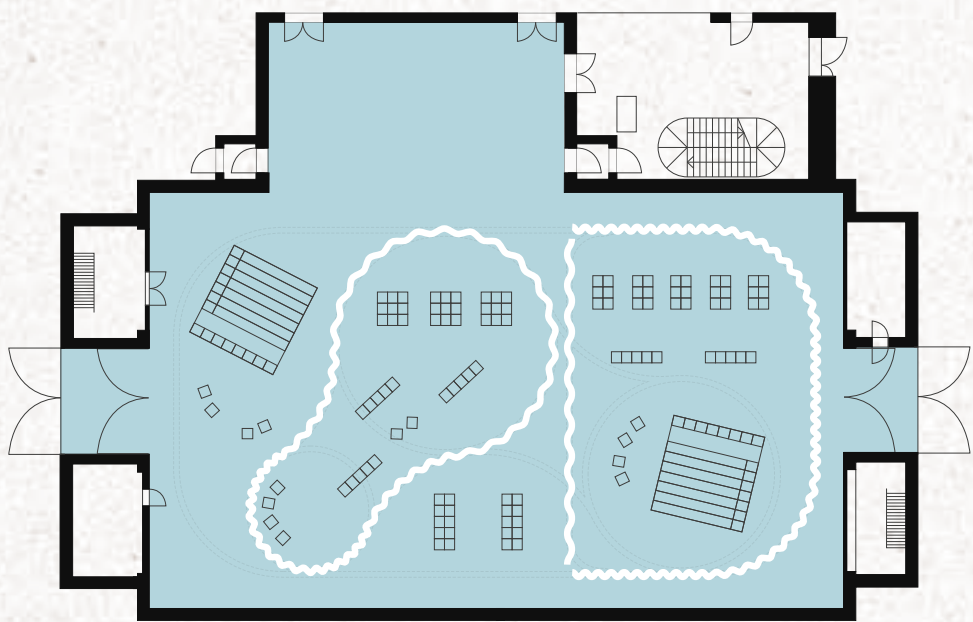
Everyday



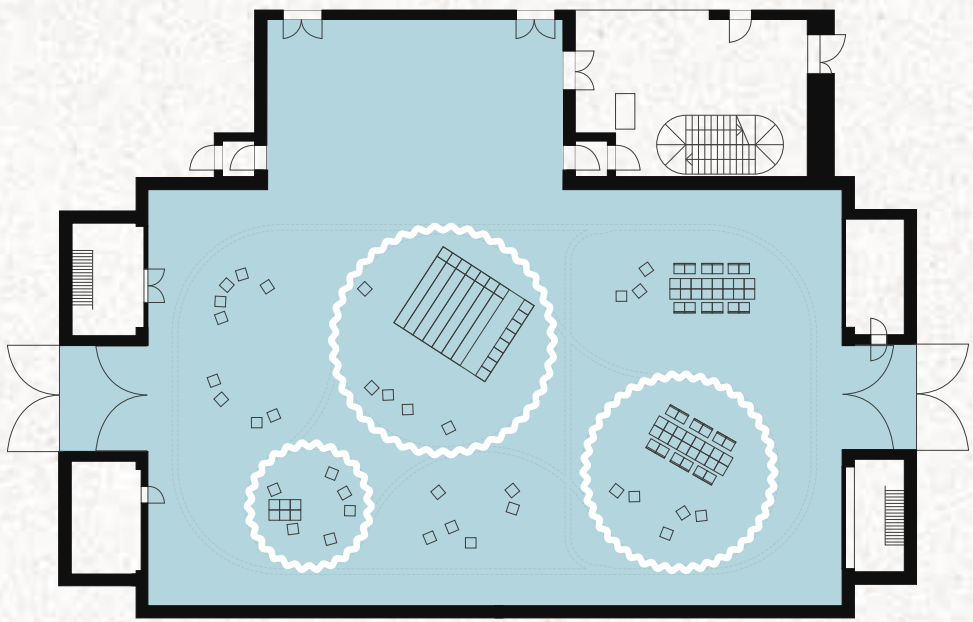
Congresses / Performances



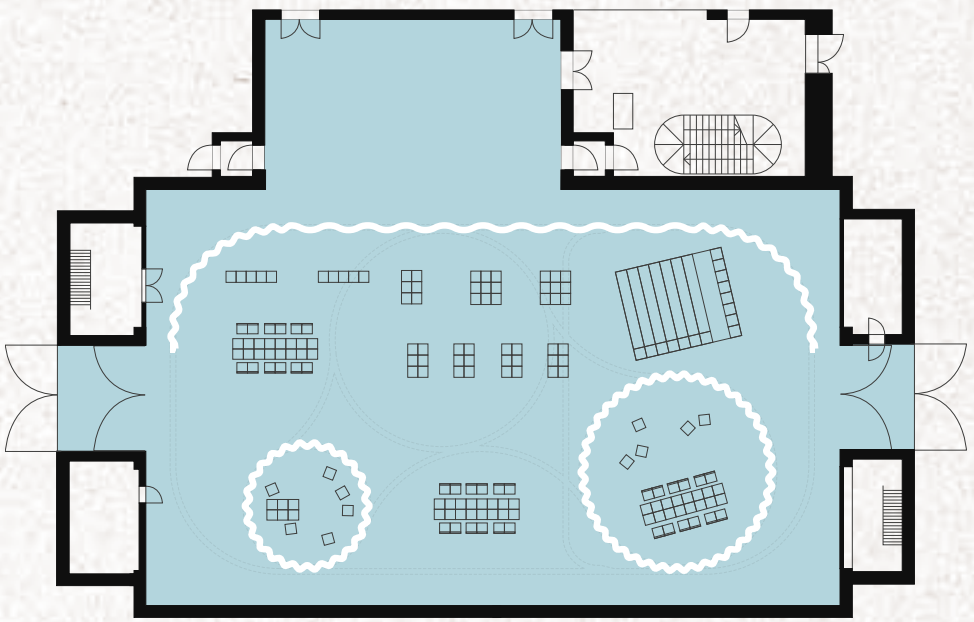
Fashion Show



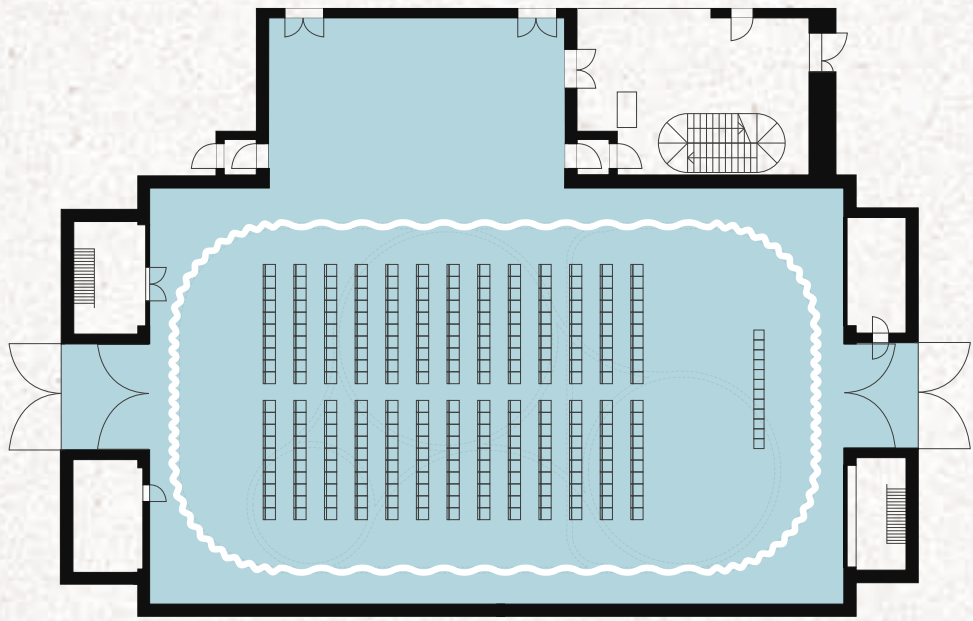
Exhibitions



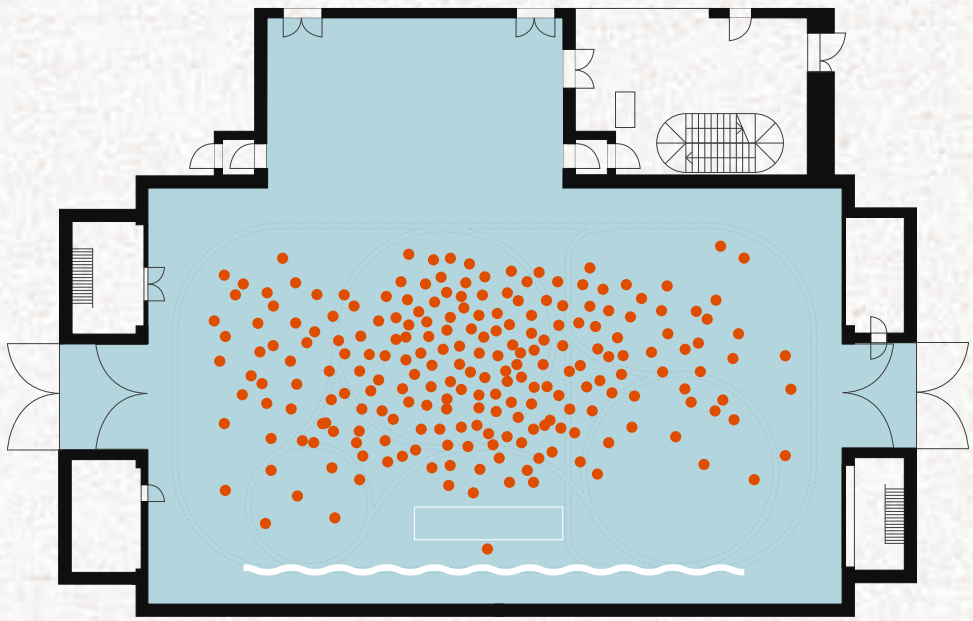
Workshops



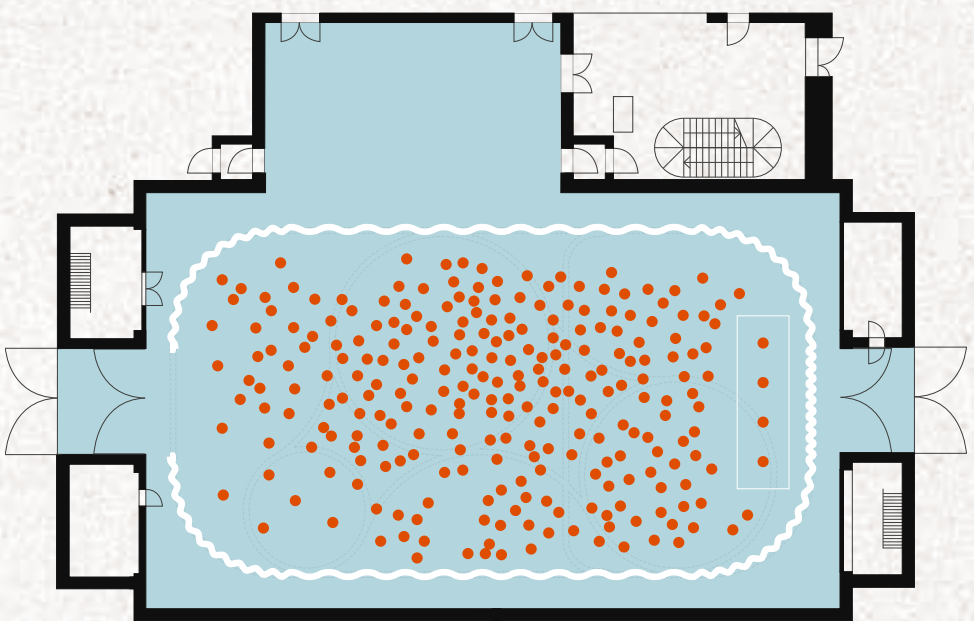
Fairs



Cinema / Conference

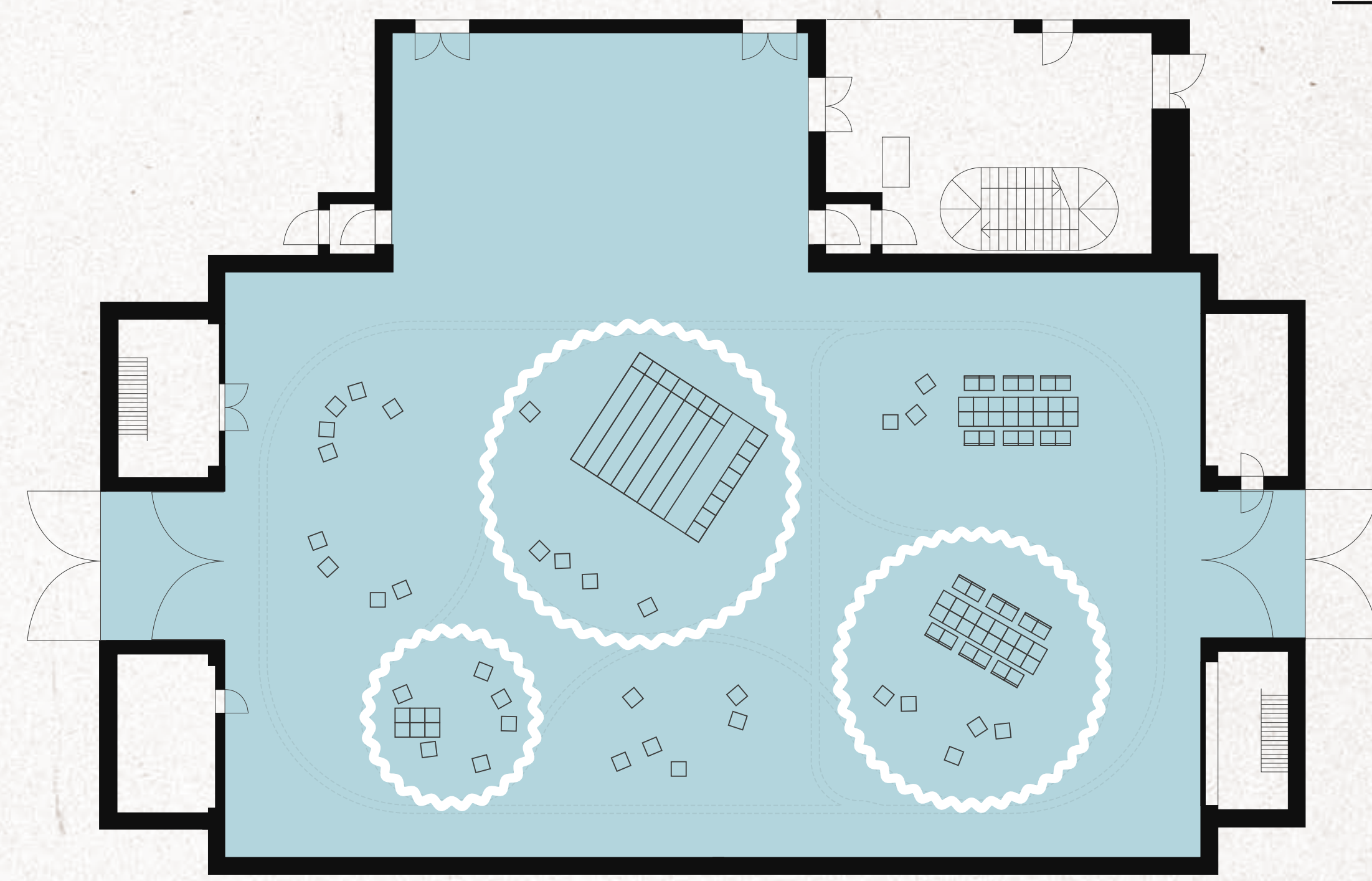


Concert / Party



Rehearsal Space





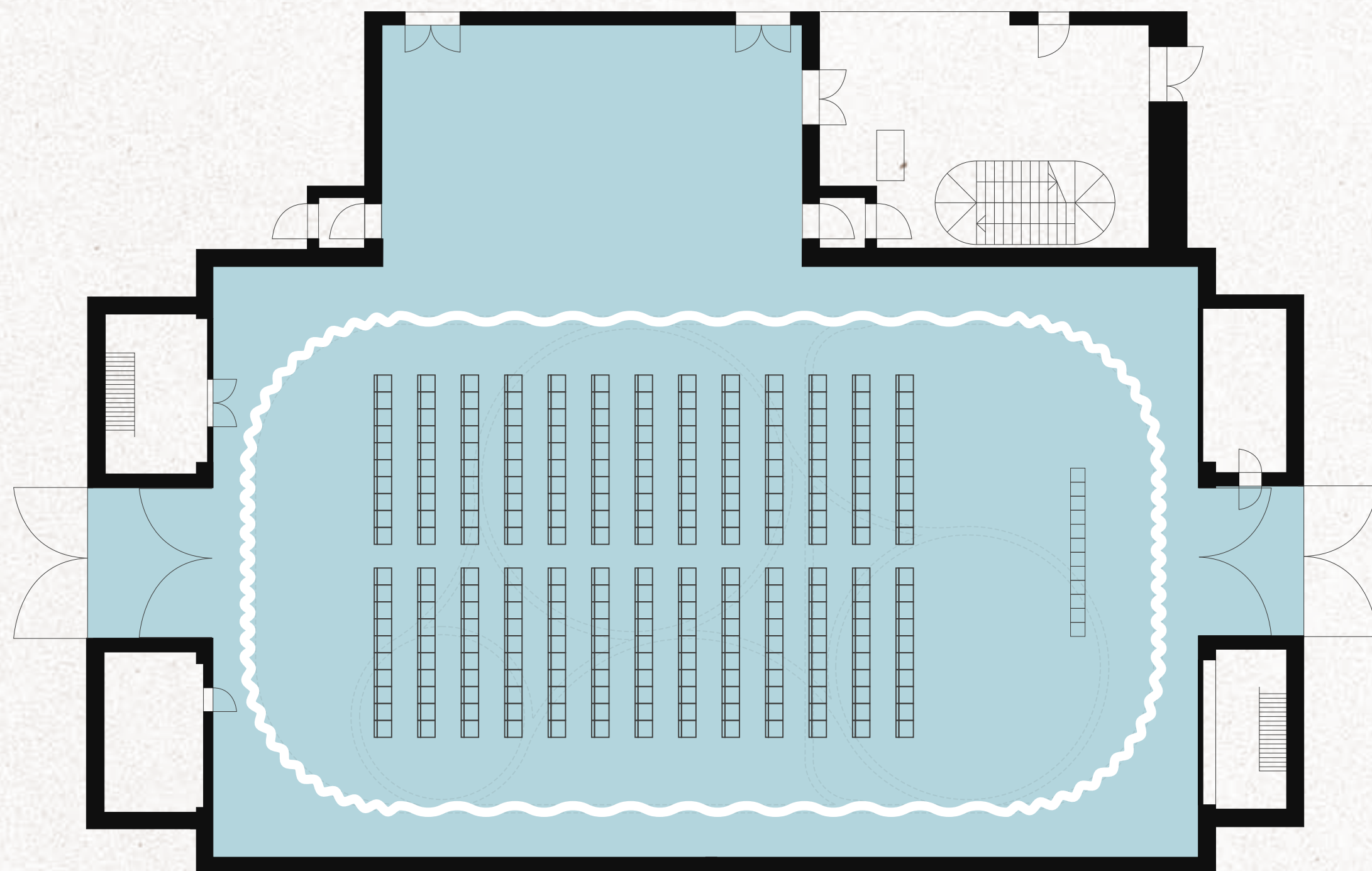
## Workshops

👤👤👤 250+ people


📐 16m<sup>2</sup> → 540m<sup>2</sup>

🔄 From small circles to big rooms






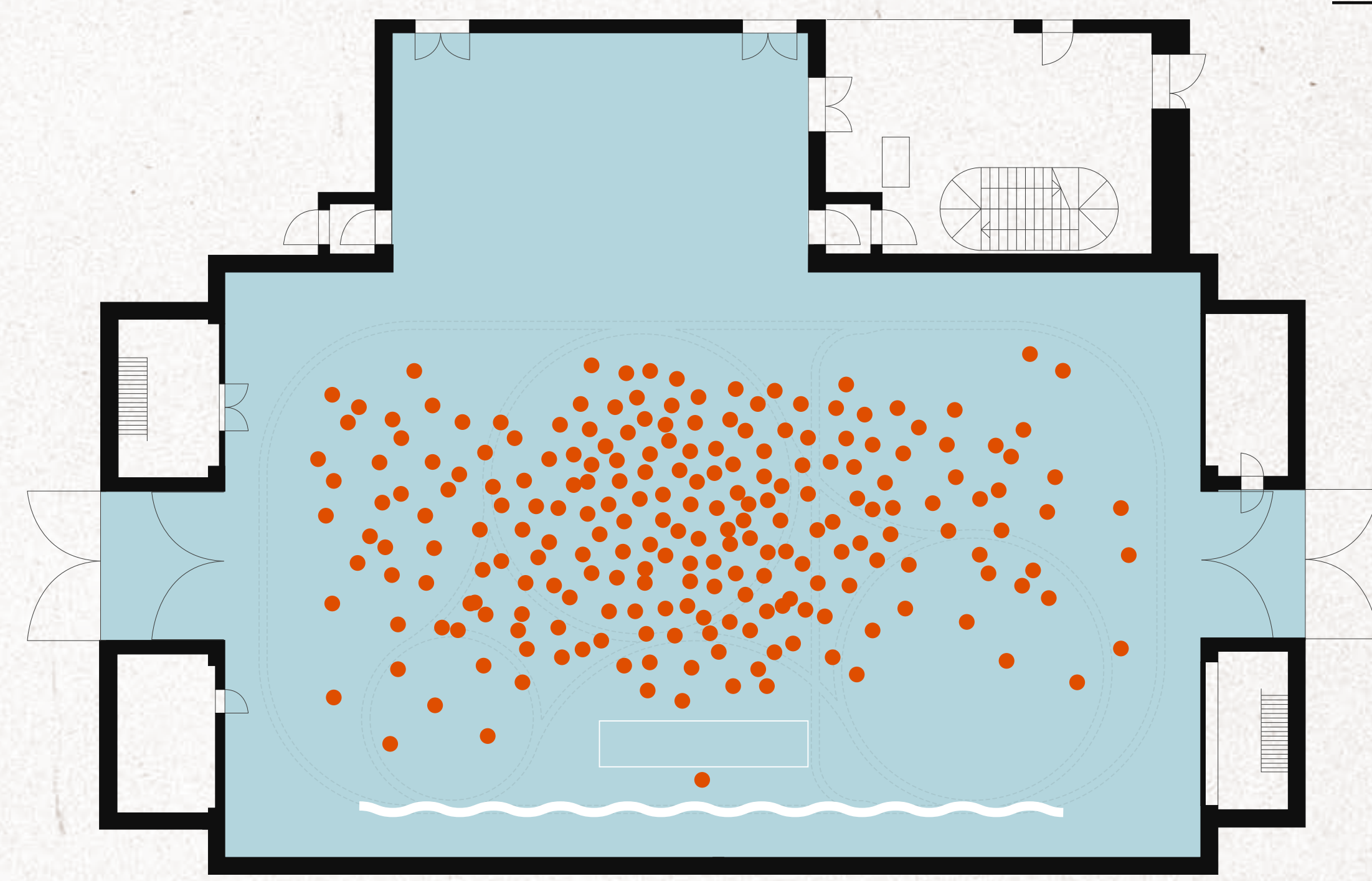
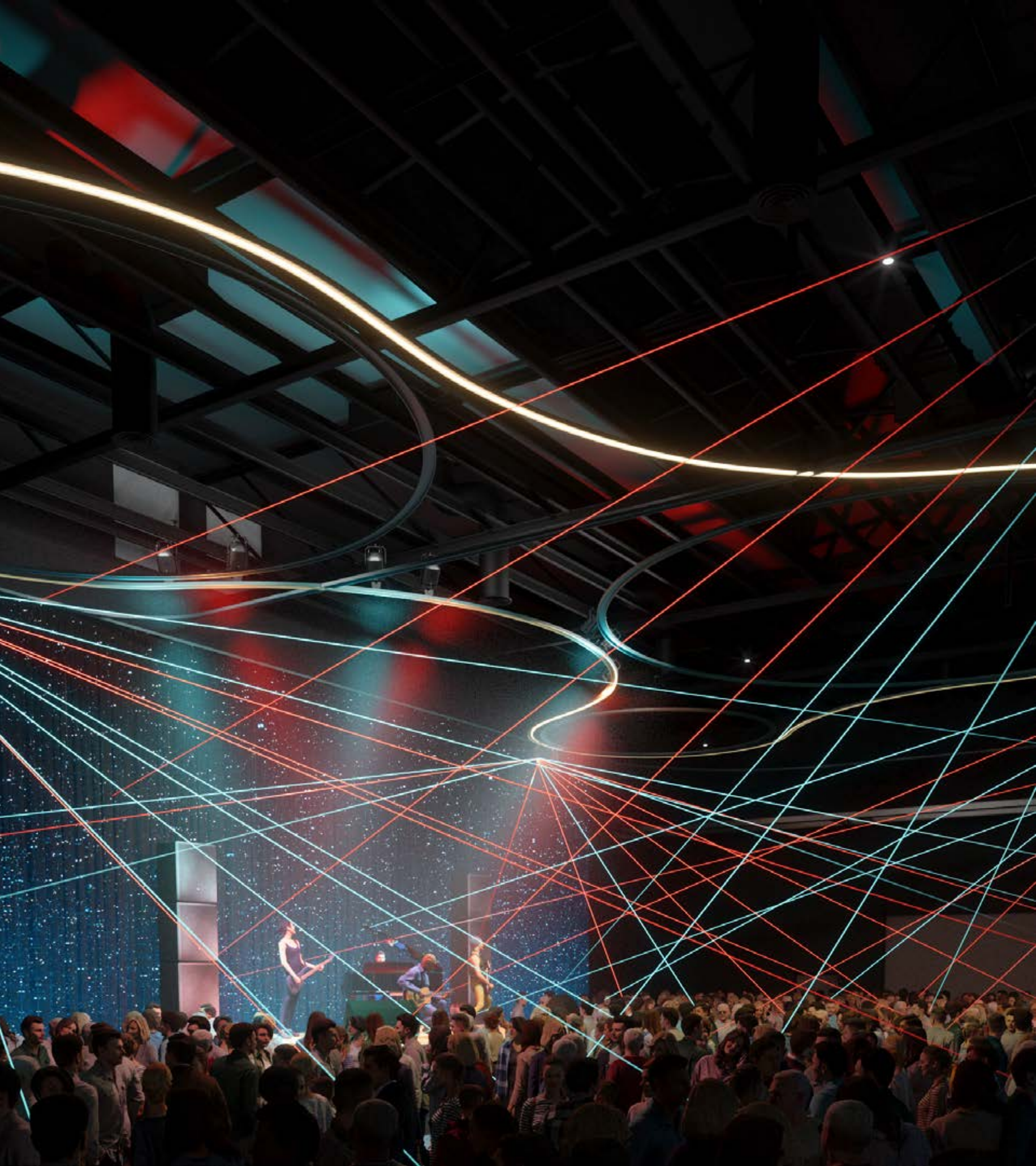
# Cinema

 500+ people


 540m<sup>2</sup>


 Enclosed screening space





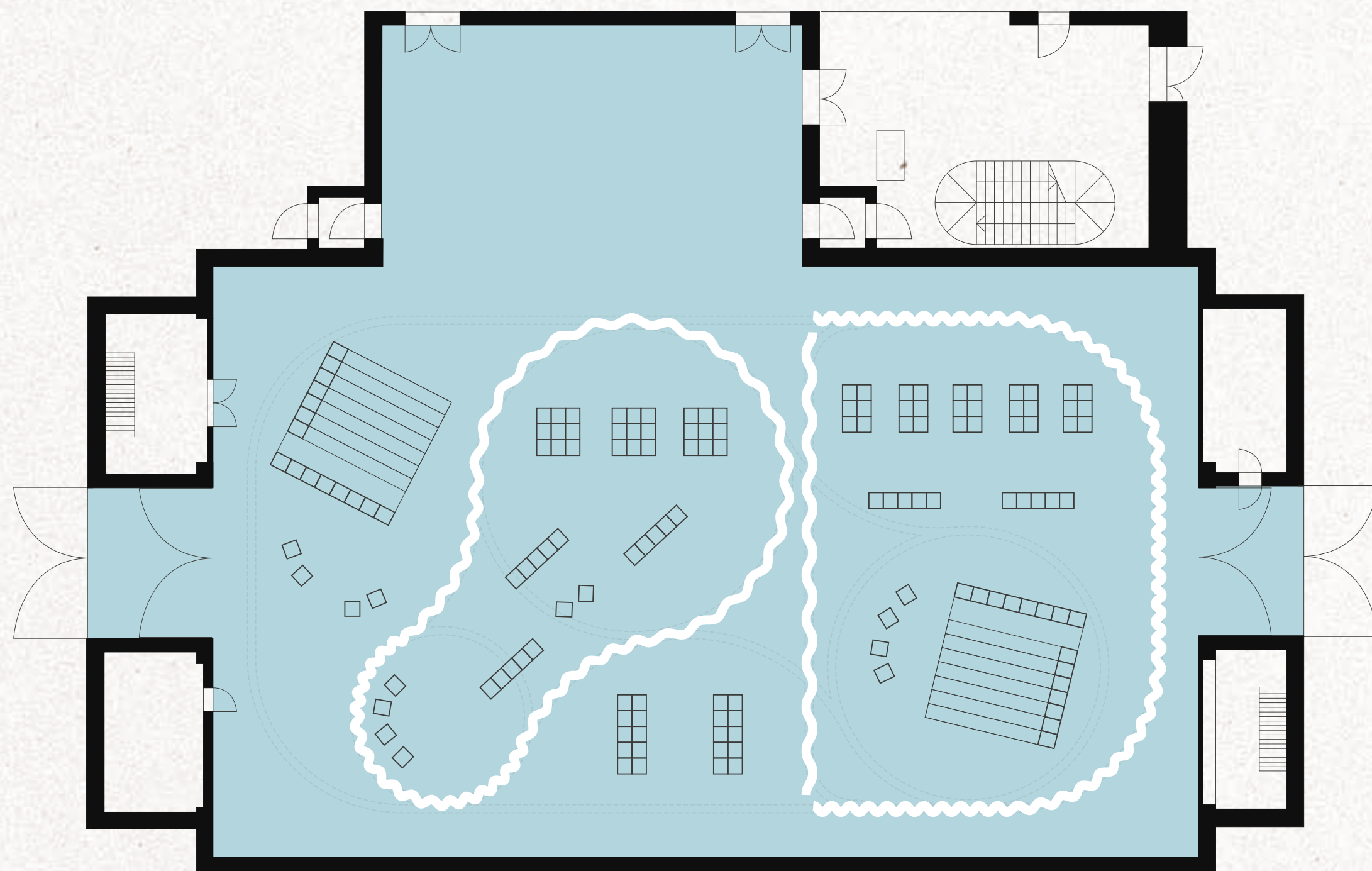
## Concert / Party

 1000+ people



 540m<sup>2</sup>

 Curtains removed





# Exhibition

-  150+ people
-  540m<sup>2</sup>
-  Flexible exhibition space





# Ton-1

## Specification

### 700 sq m

**Width:** 26.0m  
**Length:** 30.0m  
**Height:** 7.0m

**Total Area:**

From small circles to big rooms:  
16m² — 540m²

### Multiple Configurations

#### Curtain Arrangements

Number of arrangements — 15+

### 1000+ Capacity

#### A wide range of capacities

From 15—1000+ people

**Seated:** 500

**Standing:** 1000+

### Audio/Visual

#### Audio Visual

##### Lighting

- 10 Movinghead spots
- 10 Moving head washers
- 10 Fresnel lights

##### Sound

- 5.1 Surround Setup and high-spec mixers
- Line Array Components, including multiple amplifiers
- Microphones and Transmitters

#### Video/Visual

- Cinema Screen (Size: 880 x 580)
- DCP Server (Digital Cinema Package - allows for playback, recording and streaming)
- Cinema Projector (15,000+ Lumens)

### Equipment

Hydraulic ramp

### Power & Data

#### Power/data

- 17 floor tanks
- 5 wall connection panels
- 20 connection points
- In-roof lighting in ceiling area (all 230v)
- 2xCEE sockets (11kw each)
- ZDV distributor
- Power available, 50kw

### Furniture

#### Furniture

**Stages:** 2  
**Chairs:** 500  
**Tribune (x2):** 20 person capacity

### Facilities

15 toilets are available in the Ton-1 building, with more available across the campus

## Site Amenities

 Free wifi

 Make-up rooms

 Workspaces

 Canteen/Bar

 Dressing room

 Prop room



# Ton-1

## Connectivity



On Bike

- Tempelhofer Feld 5 mins
- Goltzstraße 5 mins
- Herrmannplatz 13 mins
- Friedrichstraße 13 mins
- Oranienplatz 22 mins
- City West 35 mins
- Hauptbahnhof 36 mins



On Foot

- Hermannstrasse 16 mins
- Alt-Tempelhof 22 mins
- Tempelhof 27 mins



By Train

- Sudkreuz 16 mins
- Hauptbahnhof 30 mins
- Brandenburg Airport 30 mins



By Car

- Sudkreuz 6 mins
- Brandenburg Airport 8 mins
- Hauptbahnhof 16 mins





Atelier Gardens is the **fertile soil** from which creativity, sustainability and a sense of purpose **emerge**



# Contact us

Oberlandstraße 26–35  
12099 Berlin, Germany  
[contact@atelier-gardens.com](mailto:contact@atelier-gardens.com)

[atelier-gardens.com](http://atelier-gardens.com)

ATELIER  
GARDENS

TON  
— 1

