

TON  
— 1

A place for creators,  
originators and change  
makers to thrive.

ATELIER  
GARDENS



A performer wearing a bright orange suit, a matching hat with a fur trim, and blue sunglasses is performing on a stage. The performer is holding a microphone and has one arm extended. The stage is a circular room with a polished floor. The audience is seated in rows around the stage, many are clapping and some are taking photos with their phones. The background features a dark wall with a circular light fixture at the top. The overall atmosphere is lively and festive.

Ton-1 has been transformed from a film studio into a unique and multi-functional event space like no other.

700 sq m of beautifully adaptable event space at Atelier Gardens in Berlin.

Up to 1,000 person capacity and offering best-in-class conference, screening and audio technology.

With access to pioneering garden spaces and site amenities including workspaces, organic catering facilities and a bar, all embedded in an inspirational community.



# Ton-1 welcomes all kinds of reflective, educational or celebratory activities, for groups of all shapes and sizes.

Designed by architects MVRDV, this conscientious restoration of a monument-protected building forms part of the Atelier Gardens campus – a forward-thinking and revolutionary place where facilitating societal change is the core mission.

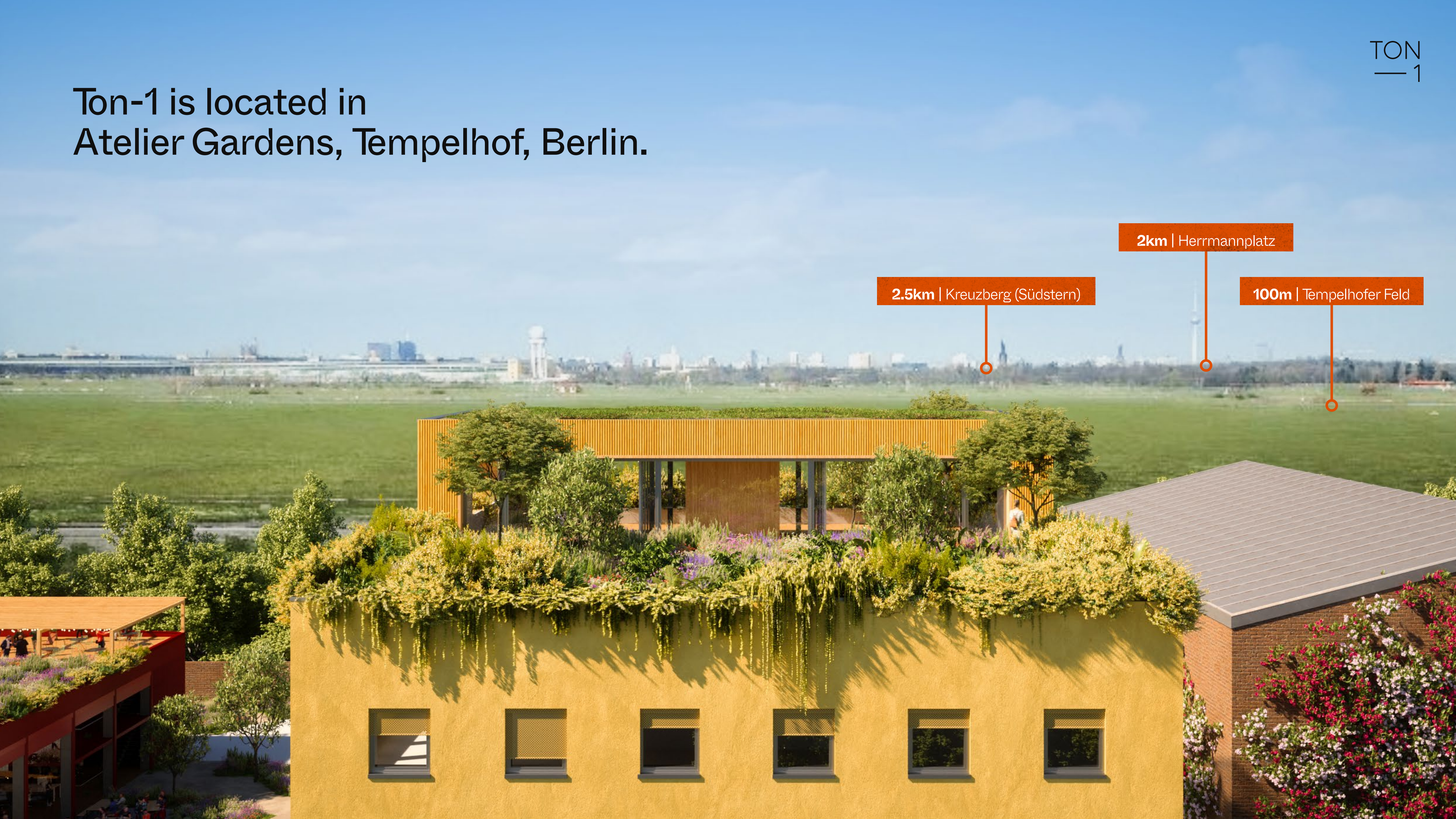
While the beautiful red-brick film studios have been the perfect place for creativity and storytelling for more than 100 years, Ton-1 has been transformed to accommodate events of the future.



**ATELIER GARDENS**



Ton-1 is located in  
Atelier Gardens, Tempelhof, Berlin.



2.5km | Kreuzberg (Südsterne)

2km | Herrmannplatz

100m | Tempelhofer Feld



# A future society.



**Atelier Gardens is the global home for the pioneers of profound societal change.**

The 23,800 sq m site is being adapted to reuse existing film studio structures and ecologically transform the landscape, revolutionising the future of farming, food, finance, film, leadership and education.

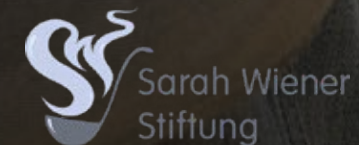
Our spaces are flexible, beautiful, brimming with nature and facilitate the work of the dynamic individuals and inspiring organisations that inhabit them.



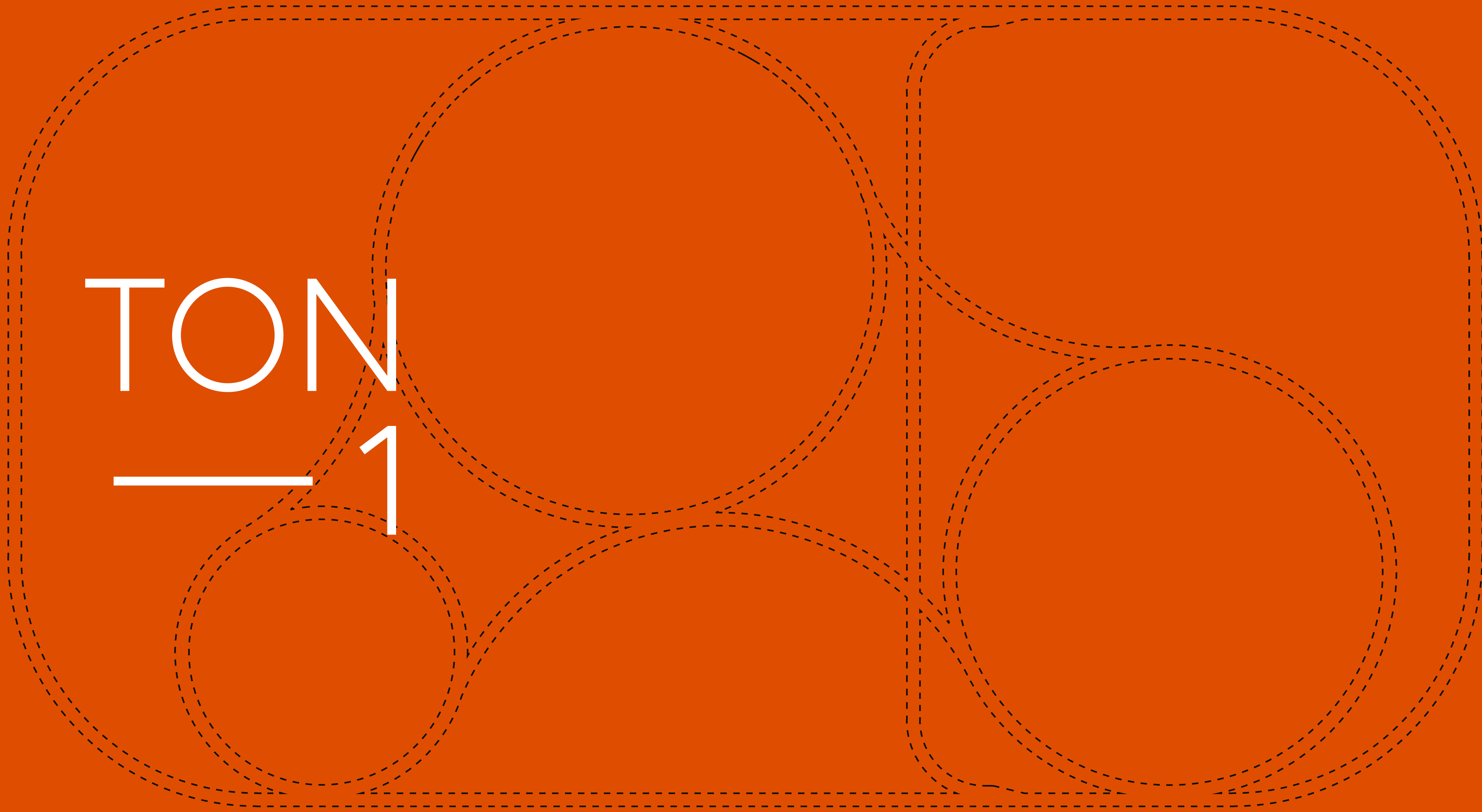
KAOSPILOT



The Peng! Collective



TON  
1





Ton-1 is a considered, sustainable space that fulfils multiple purposes. Go configure.

ATELIER GARDENS

The unique curtain rail system allows users to configure the space as needed.

The central skylights provide natural daylight and are equipped with full blackout blinds, which combined with the high-specification lighting and audio system, allows for a broad spectrum of environments and atmospheres to be created, at any time of day.

# Ton-1 is designed to be as flexible as possible.

 **700 sq m**

The studio has been sustainably repurposed to a best-in-class specification.

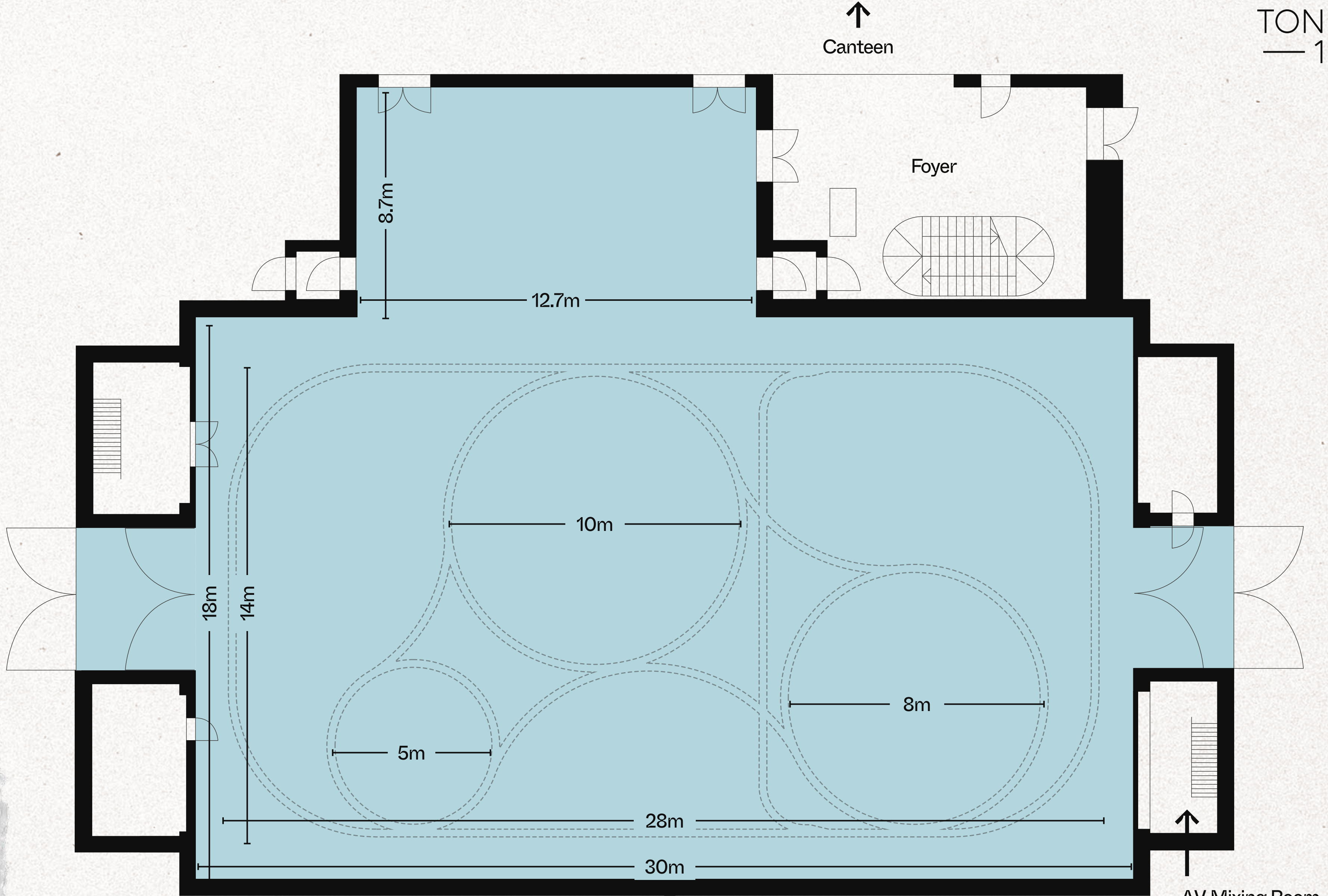
 **1,000+ people**

Capable of accommodating more than 1,000 people.

 **15+ configurations**

A highly adaptable and bespoke curtain rail system allows for subdivision into more than 15 possible configurations, enabling the space to accommodate all sized groups, learning and workshop styles.

Be that concerts, conferences, exhibitions, film screenings or workshops, the possibilities are endless. Additional catering and workspaces spaces add to this flexibility.



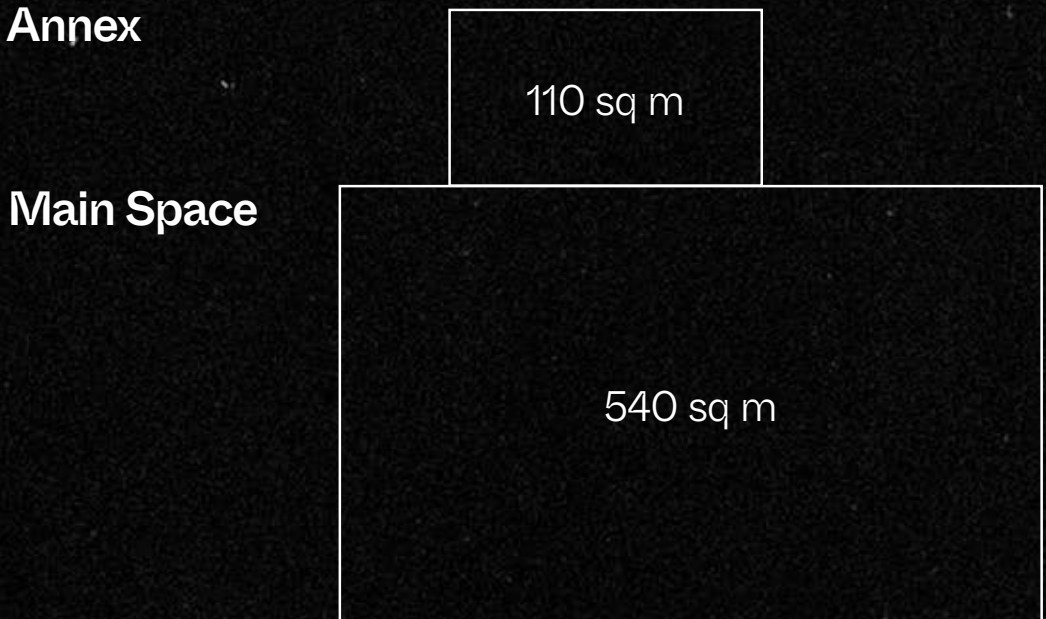
TON  
— 1

Floor to ceiling height  
6.65m to Skyrail

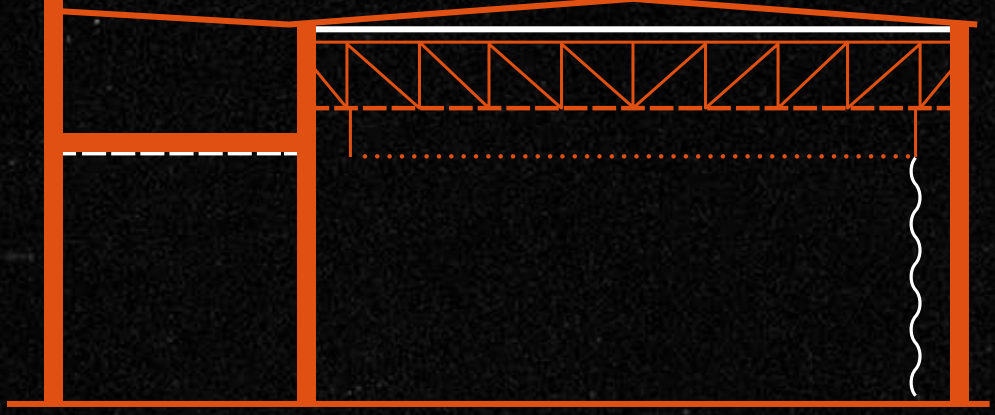
AV Mixing Room

# Tailor-made configurations for every format

 Dimension

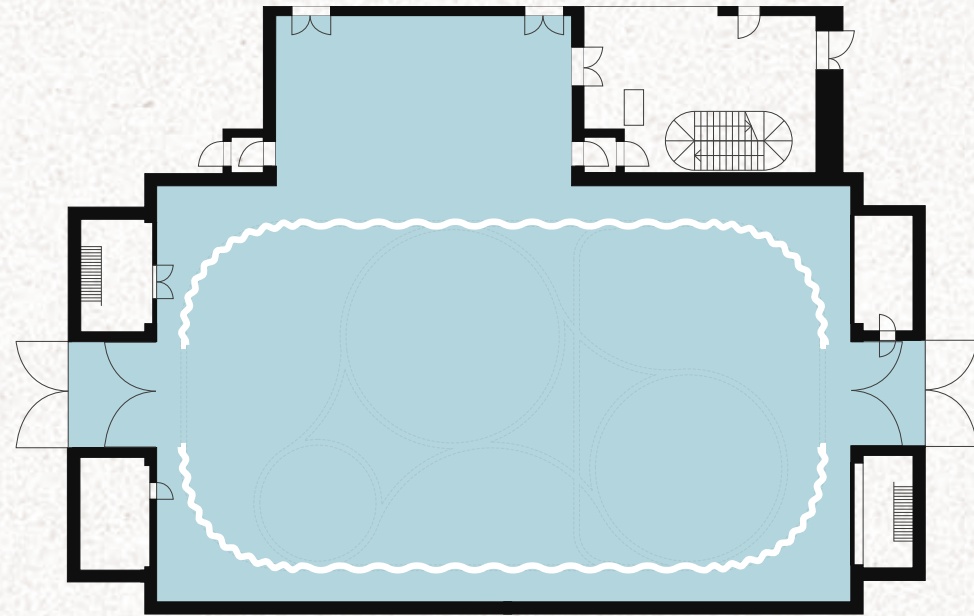


 Floor-to-ceiling Height

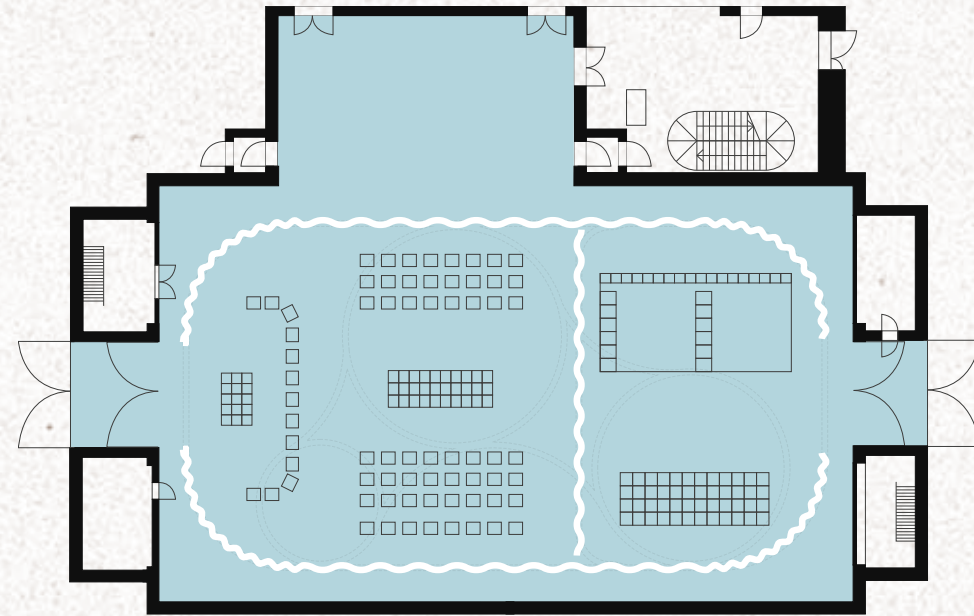


Annex  
---  
6.7m to inner ceiling

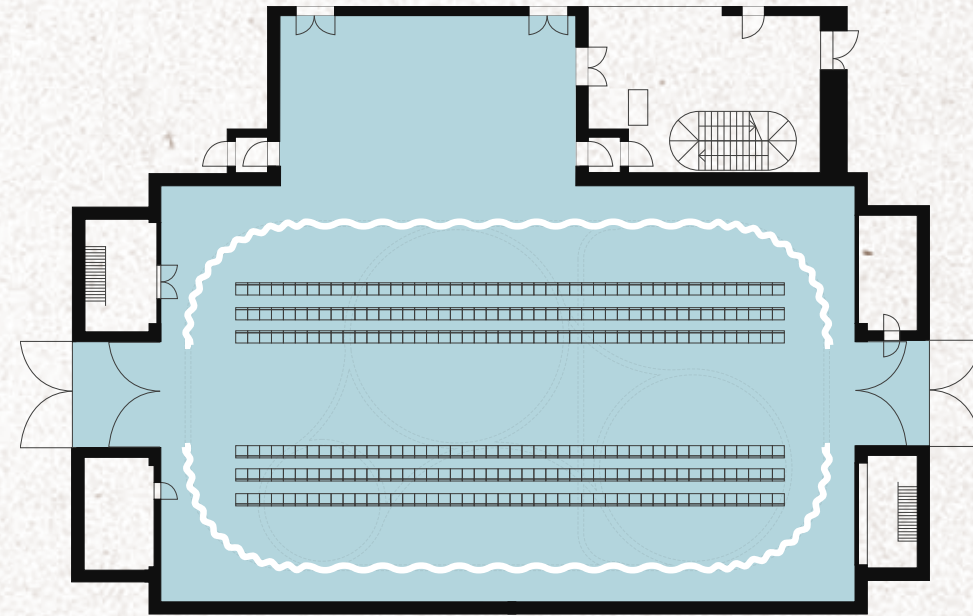
Main Space  
—  
10.0m to inner ceiling  
- - -  
8.1m to bottom of roof truss  
.....  
6.7m to skyrail



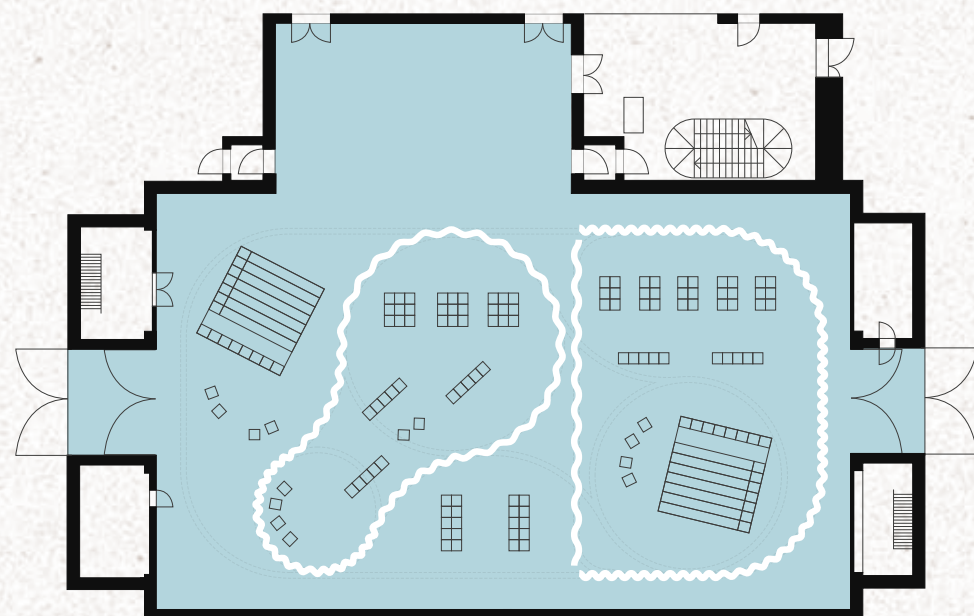
Everyday



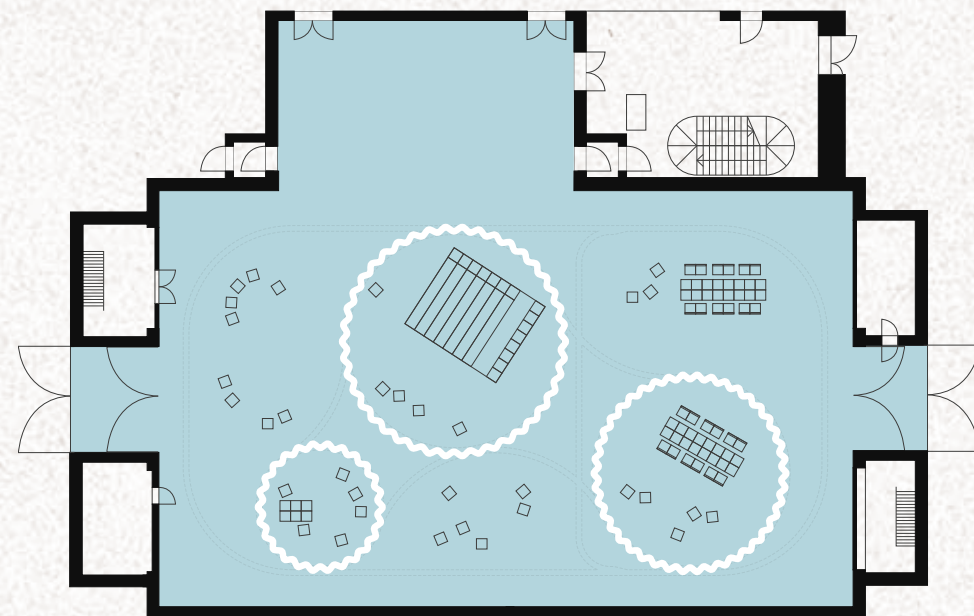
Congresses / Performances



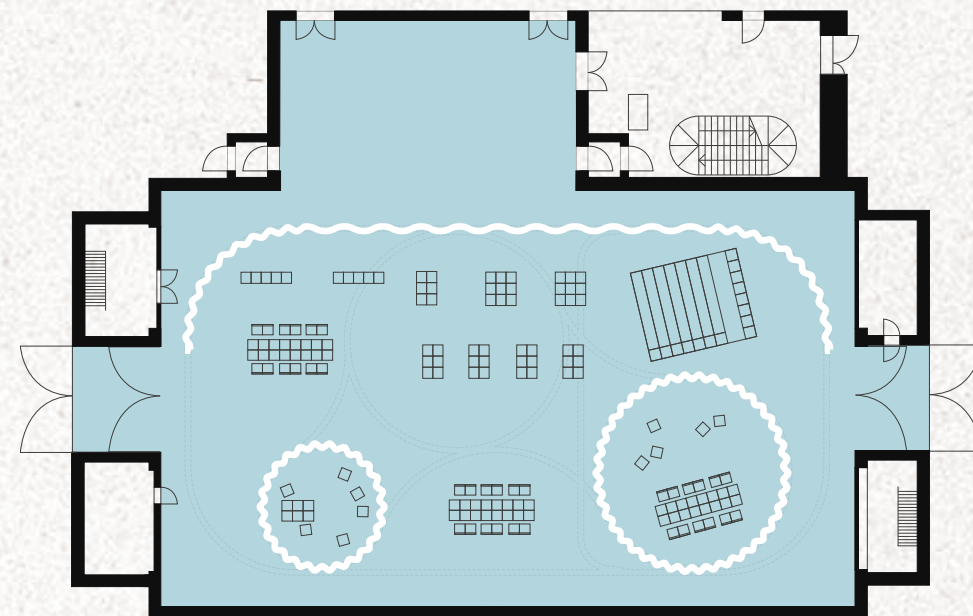
Fashion Show



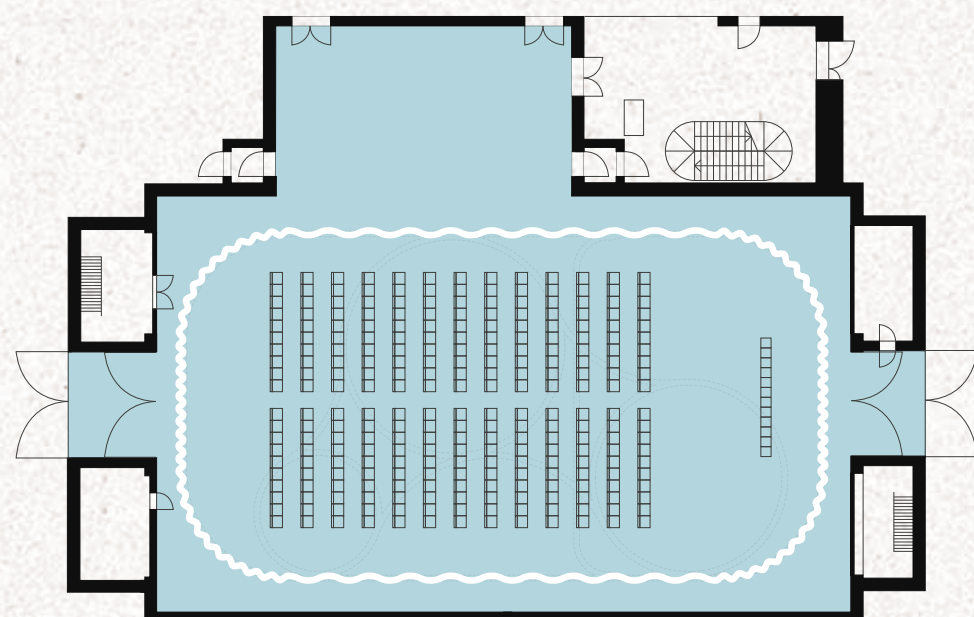
Exhibitions



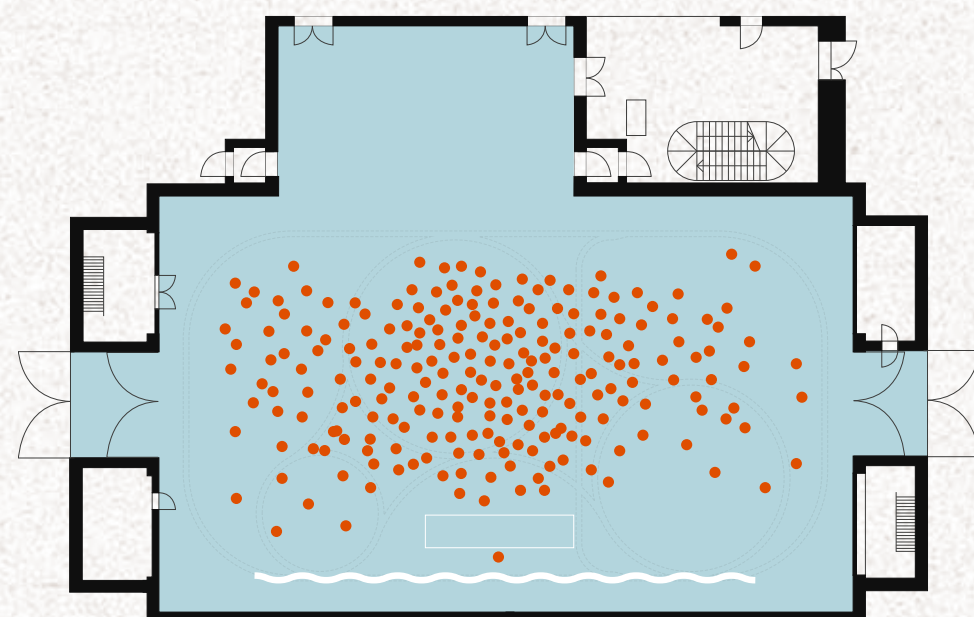
Workshops



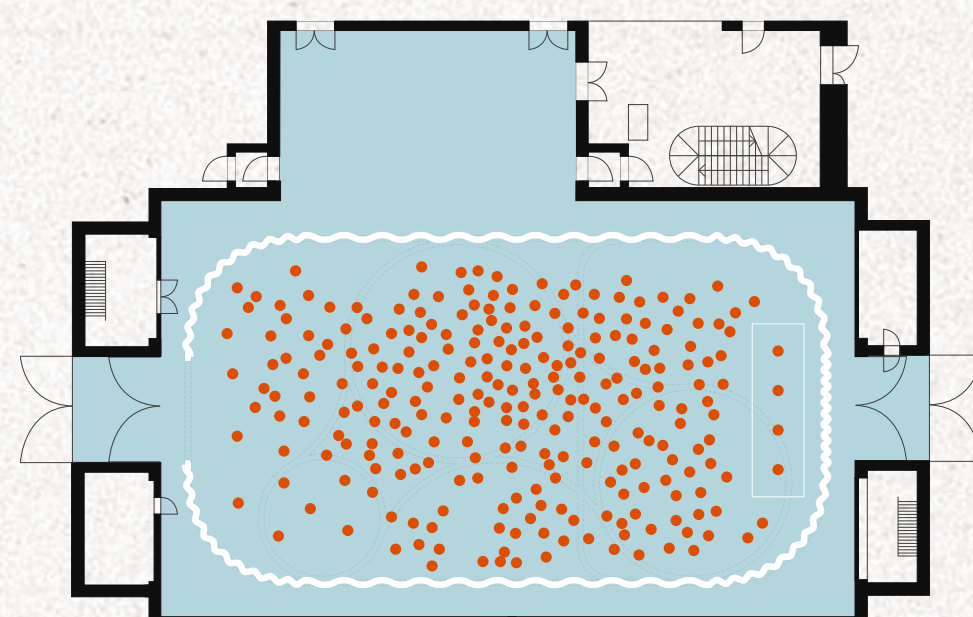
Fairs



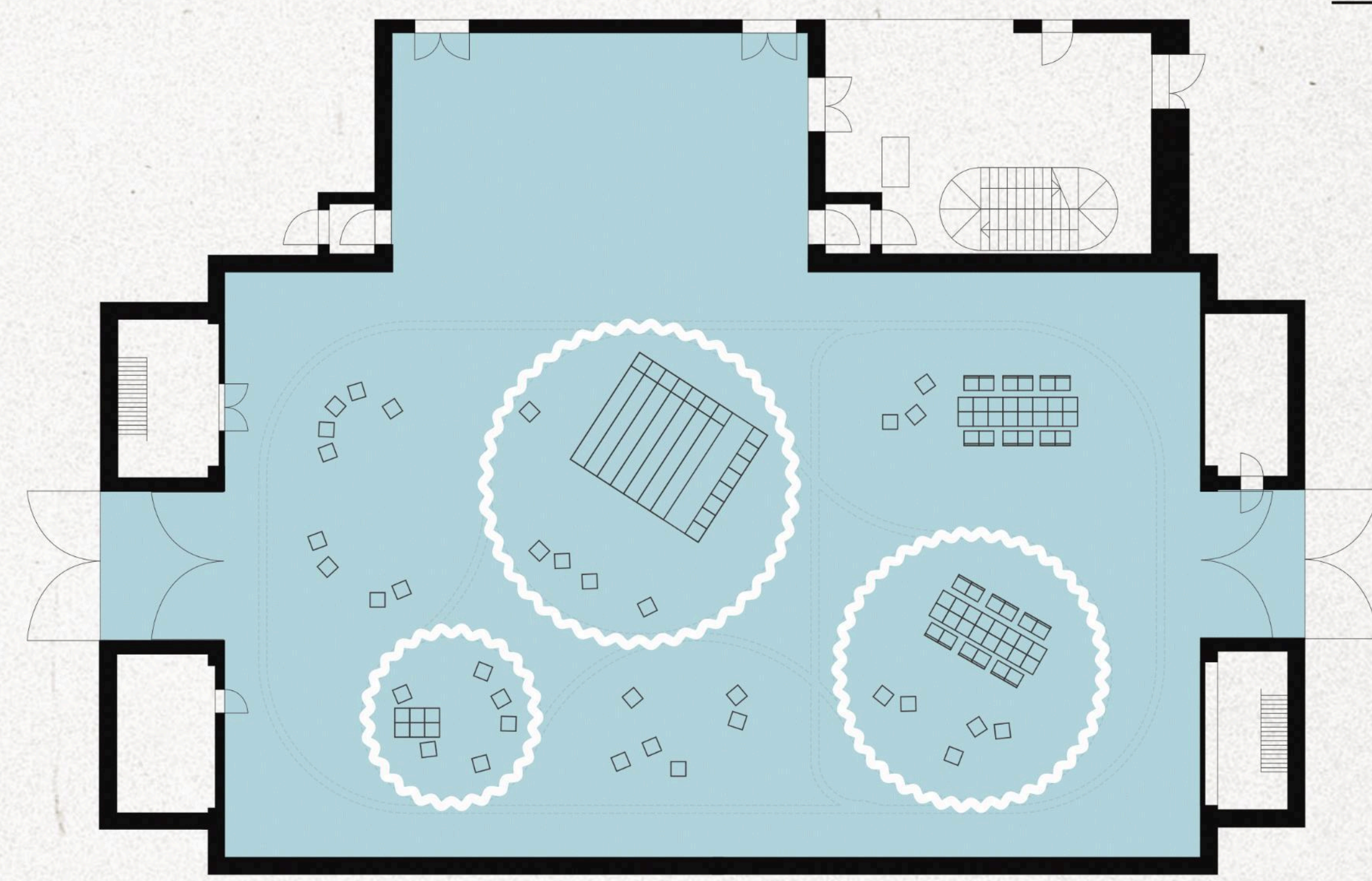
Cinema / Conference




Concert / Party





Rehearsal Space

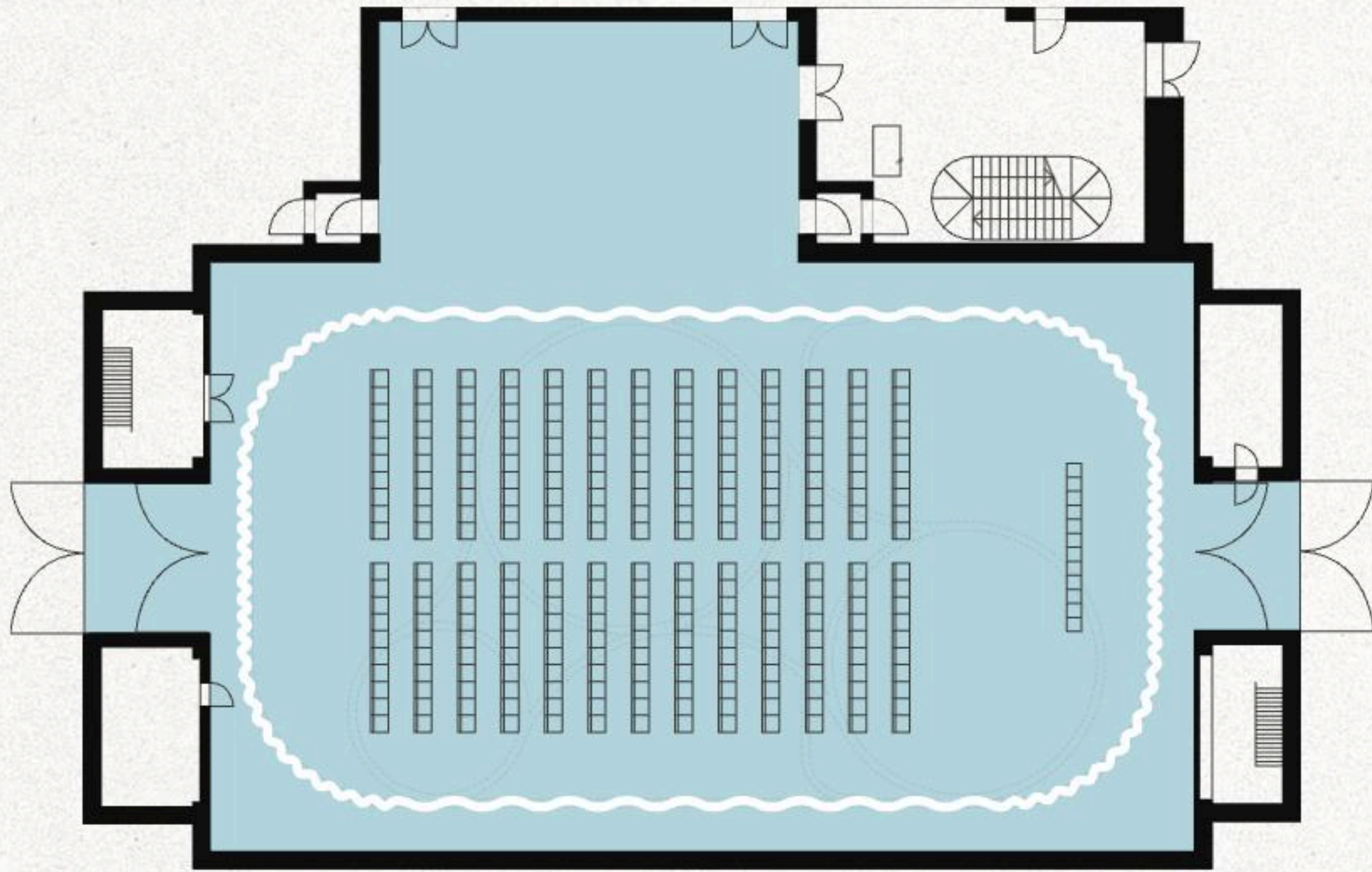


## Workshops


 250+ people


 16m<sup>2</sup> → 540m<sup>2</sup>


 From small circles to big rooms



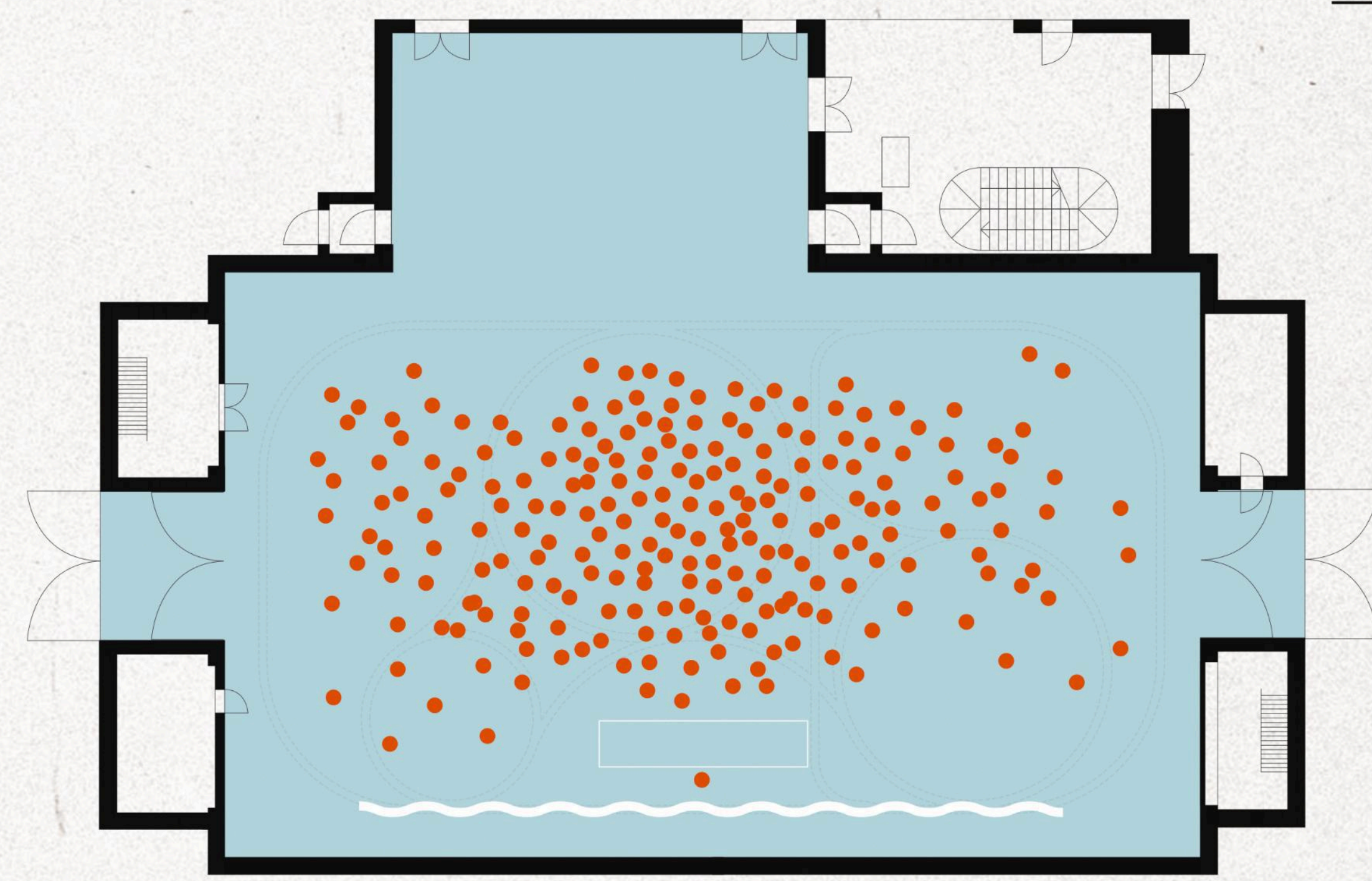
## Cinema

 500+ people


 540m<sup>2</sup>


 Enclosed screening space




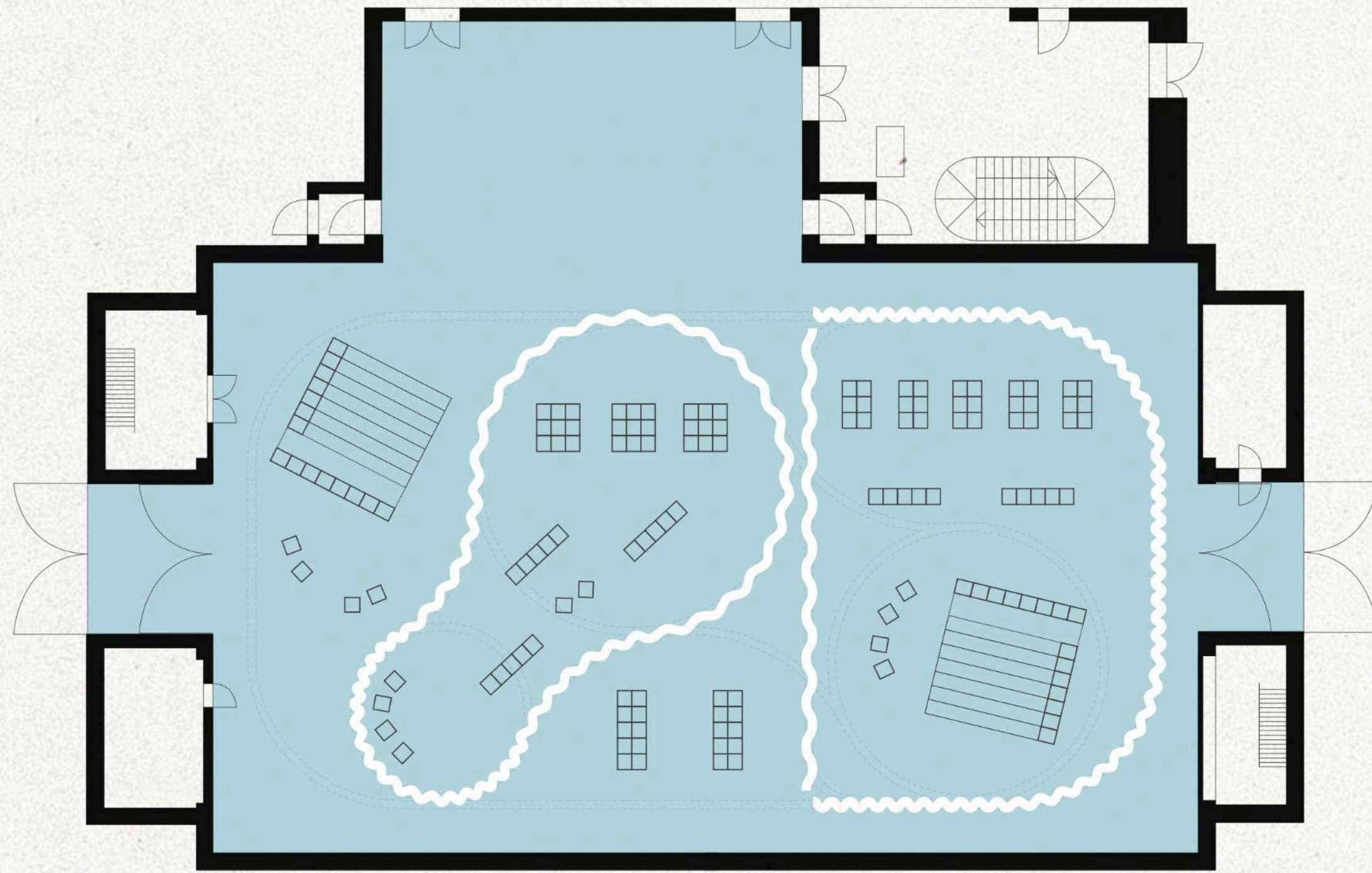


## Concert / Party


 1000+ people

 540m<sup>2</sup>


 Curtains removed



## Exhibition

 150+ people

 540m<sup>2</sup>

 Flexible exhibition space



# Ton-1 Specification

 700 sq m

**Width:** 26.0m  
**Length:** 30.0m  
**Height:** 7.0m


**Total Area:**

From small circles to big rooms:  
16m<sup>2</sup> — 540m<sup>2</sup>

 **Multiple  
Configurations**

**Curtain Arrangements**

Number of arrangements — 15+

 **1000+ Capacity**

**A wide range of capacities**

From 15—1000+ people

**Seated:** 500

**Standing:** 1000+

 **Audio/Visual**

**Audio Visual**

**Lighting**

- 10 Movinghead spots
- 10 Moving head washers
- 10 Fresnel lights

**Sound**

- 5.1 Surround Setup and high-spec mixers
- Line Array Components, including multiple amplifiers
- Microphones and Transmitters

**Video/Visual**

- Cinema Screen (Size: 880 x 580)
- DCP Server (Digital Cinema Package - allows for playback, recording and streaming)
- Cinema Projector (15,000+ Lumens)

 **Equipment**

Hydraulic ramp

 **Power & Data**

**Power/data**

- 17 floor tanks
- 5 wall connection panels
- 20 connection points
- In-roof lighting in ceiling area (all 230v)
- 2xCEE sockets (11kw each)
- ZDV distributor
- Power available, 50kw

 **Furniture**

**Furniture**

**Stages:** 2  
**Chairs:** 500  
**Tribune (x2):** 20 person capacity

 **Facilities**

15 toilets are available in the Ton-1 building, with more available across the campus

## Site Amenities

 **Free wifi**

 **Make-up rooms**

 **Workspaces**

 **Canteen/Bar**

 **Dressing room**

 **Prop room**



# Ton-1 Connectivity



On Bike

Tempelhofer Feld **5 mins**  
 Goltzstraße **5 mins**  
 Herrmannplatz **13 mins**  
 Friedrichstraße **13 mins**  
 Oranienplatz **22 mins**  
 City West **35 mins**  
 Hauptbahnhof **36 mins**



On Foot

Hermannstrasse **16 mins**  
 Alt-Tempelhof **22 mins**  
 Tempelhof **27 mins**



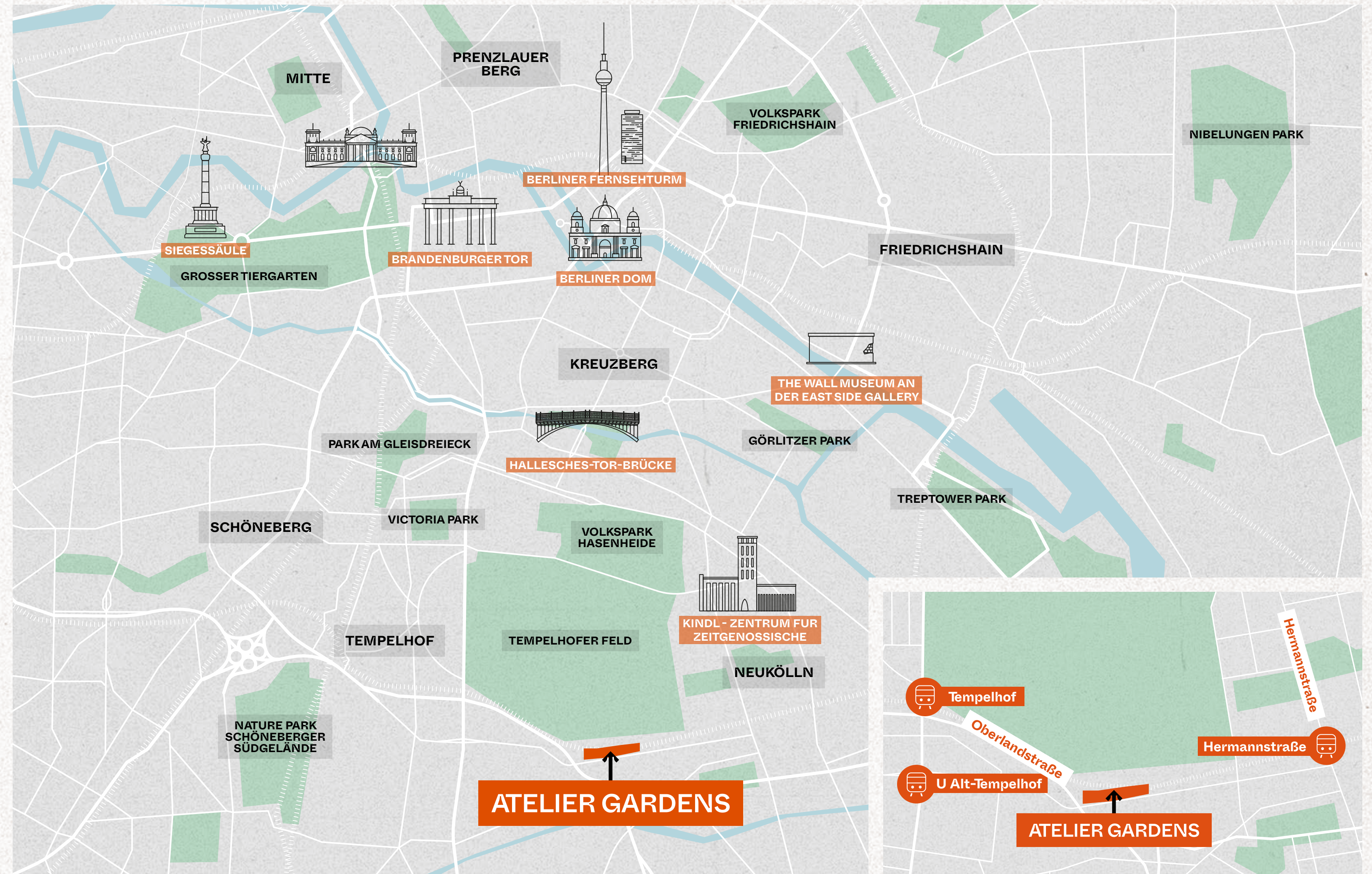
By Train

Sudkreuz **16 mins**  
 Hauptbahnhof **30 mins**  
 Brandenburg Airport **30 mins**



By Car

Sudkreuz **6 mins**  
 Brandenburg Airport **8 mins**  
 Hauptbahnhof **16 mins**



Atelier Gardens is the **fertile soil** from which creativity, sustainability and a sense of purpose **emerge**

# Contact us

Oberlandstraße 26–35  
12099 Berlin, Germany  
[info@atelier-gardens.berlin](mailto:info@atelier-gardens.berlin)

[atelier-gardens.de](http://atelier-gardens.de)

ATELIER  
GARDENS

TON  
— 1